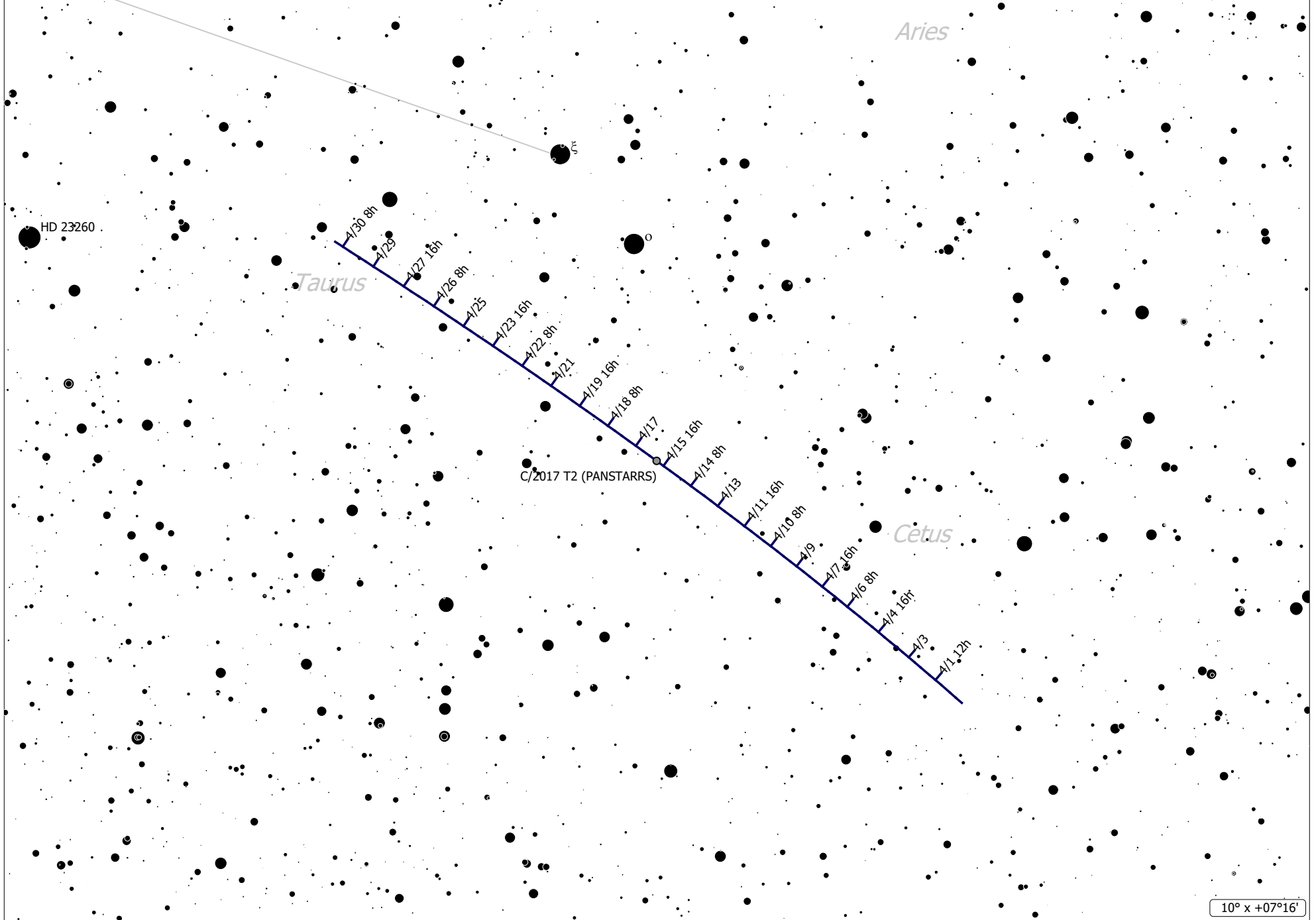


41° x 29°

C/2017 T2 (PANSTARRS) (Comet) Distance: 5.6 AU
 Magnitude: 10.52 Coma Diameter: 3.5' SBr: 21.9 Mag/arcsec² Earth





C/2017 T2 (PANSTARRS) (Comet) Distance: 5.6 AU
 Magnitude: 10.52 Coma Diameter: 3.5' SBR: 21.9 Mag/arcsec² Earth

