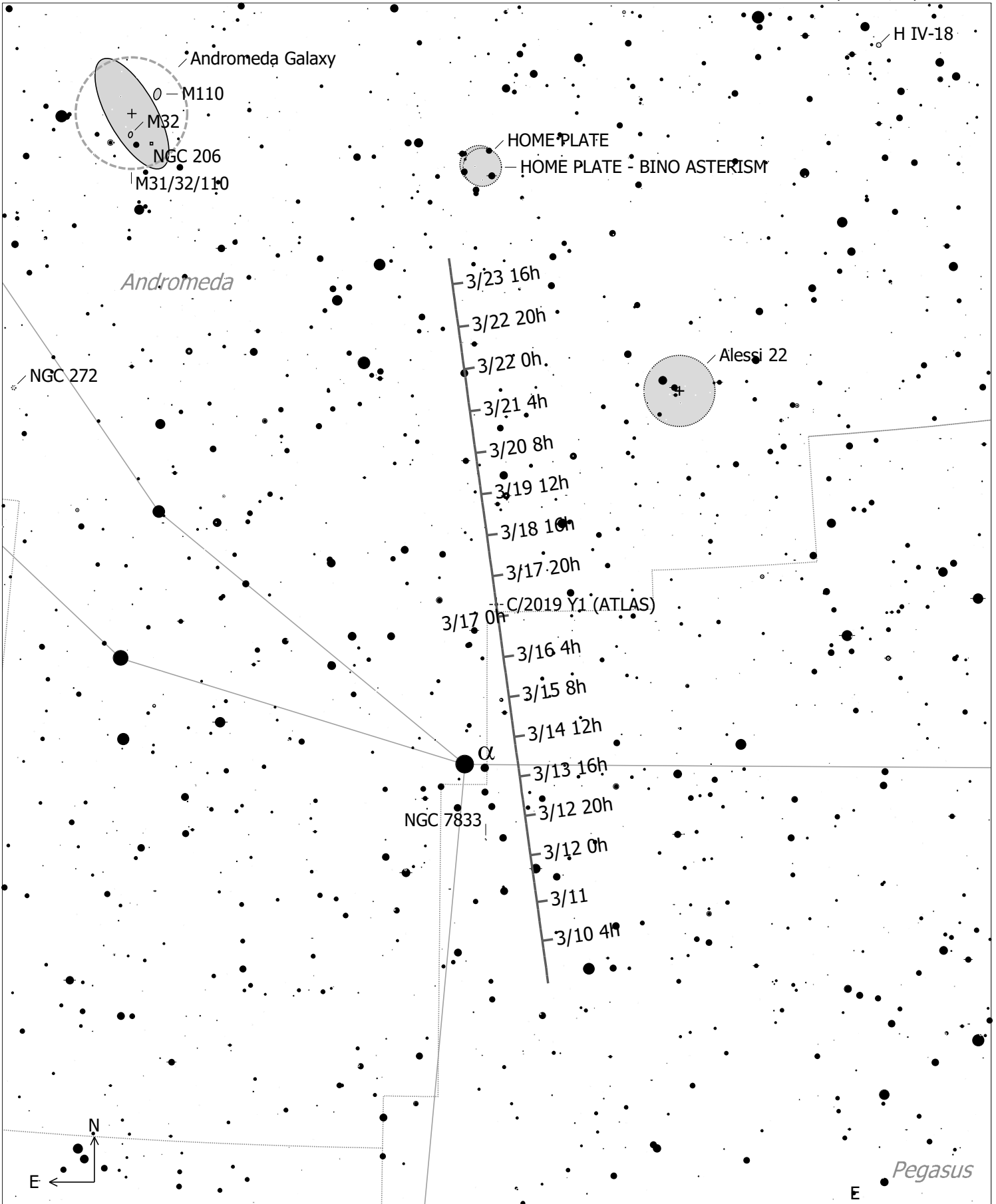


2020 March 17 06:00, 40N  
 Br. twilight (optimum conditions)  
 C/2019 Y1 (ATLAS) (Comet)  
 R.A. 00h05m36.0s Dec. +32°09'59" J2000 (And)  
 Magnitude: 9.27 Coma Diameter: 3.1' SBr: 20.4 Mag/arcsec<sup>2</sup> Earth Distance: 1.5 AU

◻ Ref. Neb.	• Mult. Star	• 5	● -1
◊ Dark Neb.	☾ Comet	• 6	● 0
● Globule	• Minor Planet	● 1	● 2
○ Open Cl.	○ Galaxy	● 3	● 4
● Globular Cl.	○ Galaxy Gr.	● Quasar	
	● Planetary	◻ HII Region	
	◻ SN Remnant		



2020 March 17 06:00, 40N  
 Br. twilight (optimum conditions)  
 C/2019 Y1 (ATLAS) (Comet)

◇ + Dark Neb.	● Quasar	• Mult. Star	● 6	● 2
● Globule	● Planetary	☾ Comet	● 7	● 3
○ Open Cl.	□ HII Region	● Minor Planet	● 8	● 4
● Globular Cl.	□ SN Remnant	○ Galaxy	● 9	● 5
	□ Ref. Neb.	○ Galaxy Gr.		