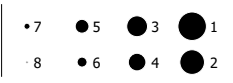
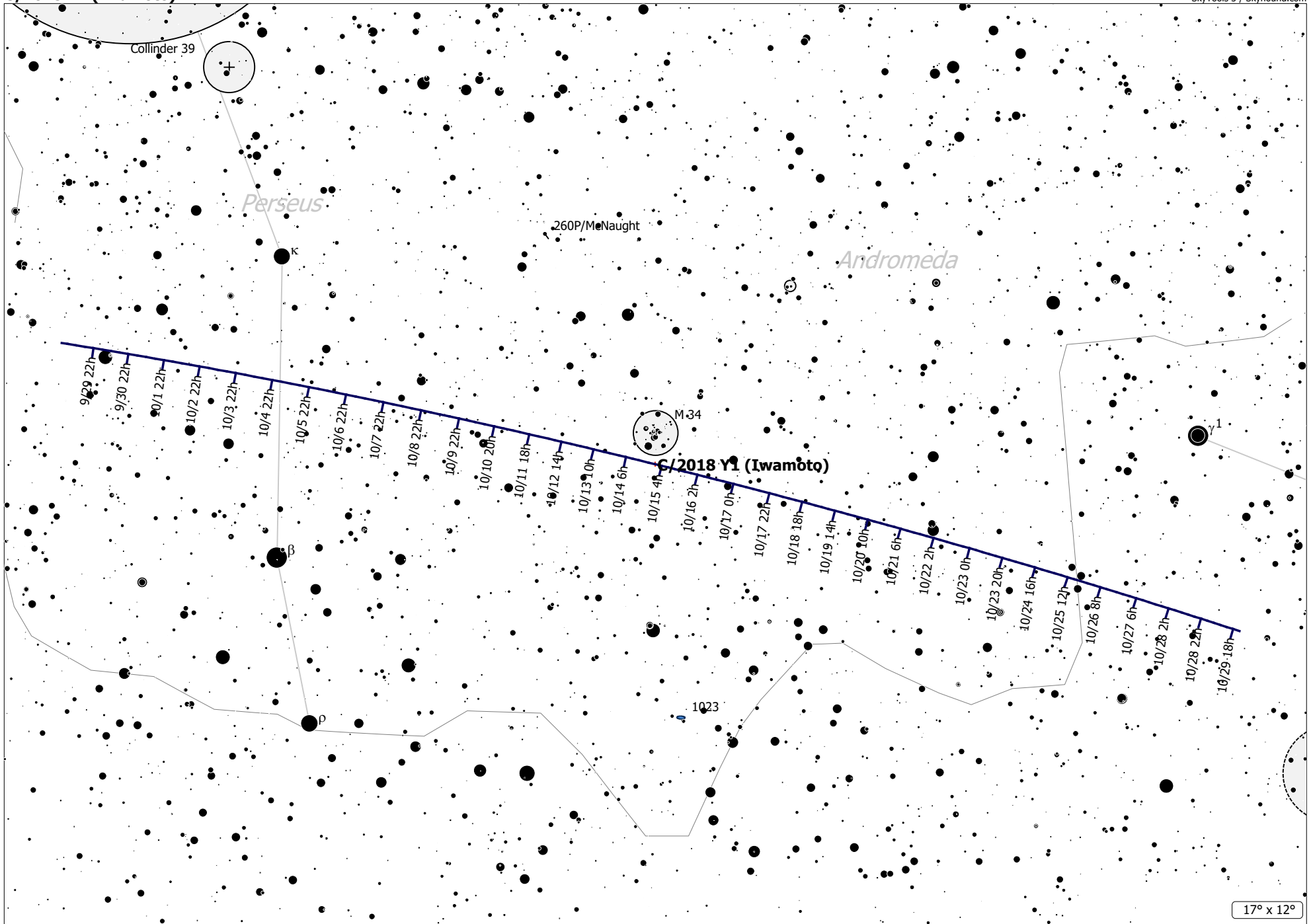


C/2018 Y1 (Iwamoto) (Comet)
 Magnitude: 12.72 Coma Diameter: 1.1' SBr: 21.5 Mag/arcsec² Earth

Distance: 2.7 AU



45° x 32°



C/2018 Y1 (Iwamoto) (Comet)
 Magnitude: 12.72 Coma Diameter: 1.1' SBR: 21.5 Mag/arcsec² Earth

Distance: 2.7 AU

