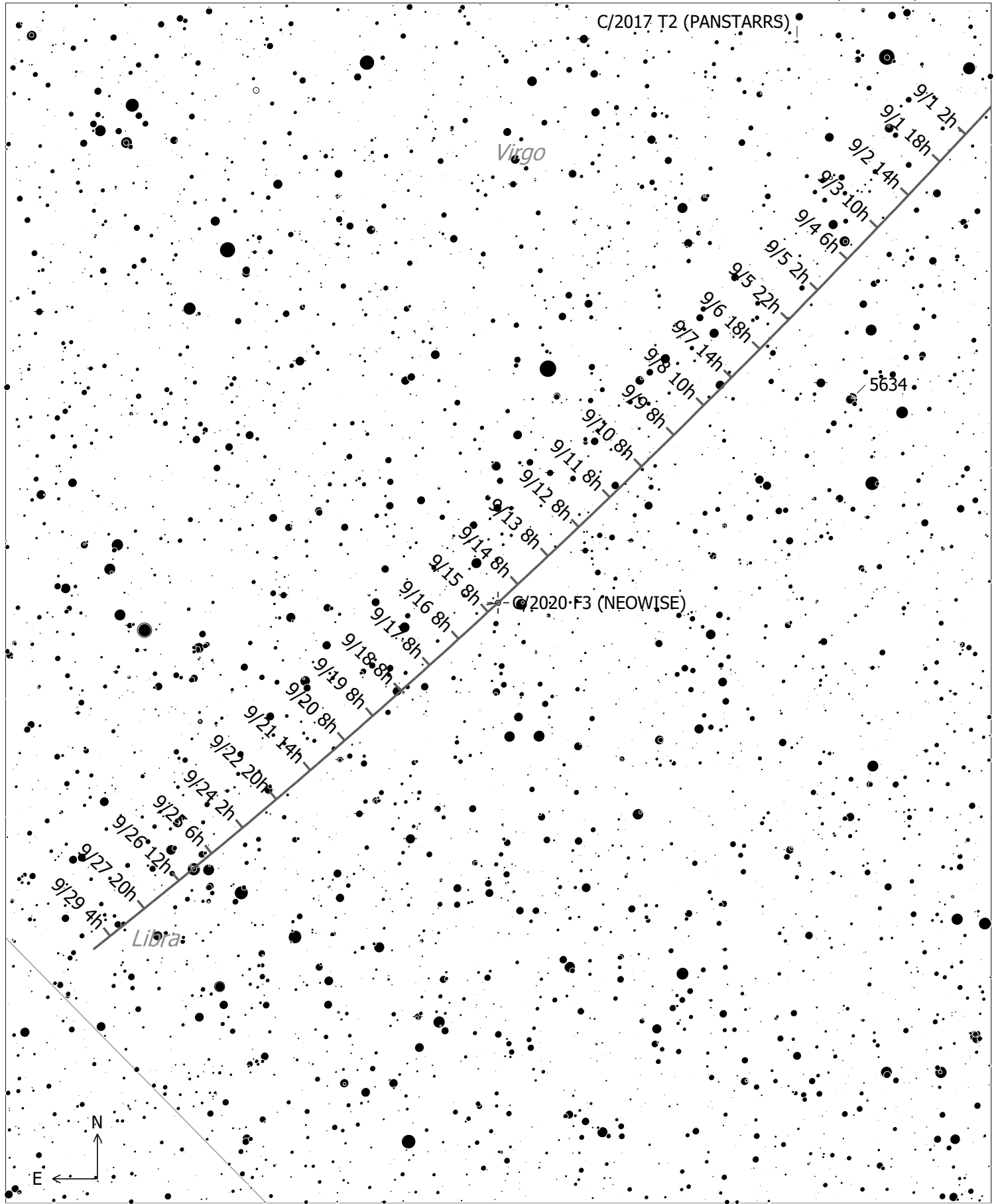


C/2020 F3 (NEOWISE) (Comet)
 Magnitude: 9.96 Coma Diameter: 3.5' SBr: 21.3 Mag/arcsec² Earth Distance: 2.1 AU

- | | | |
|----------------|---------------|---------|
| ◇ Dark Neb. | • Mult. Star | • 7 ● 1 |
| ● Globule | ☄ Comet | • 8 ● 2 |
| ○ Open Cl. | ○ Galaxy | ● 3 |
| ● Globular Cl. | ○ Galaxy Gr. | ● 4 |
| | ● Quasar | ● 5 |
| | ● Planetary | ● 6 |
| | □ H II Region | |
| | □ SN Remnant | |
| | □ Ref. Neb. | |



C/2020 F3 (NEOWISE) (Comet)
 Magnitude: 9.96 Coma Diameter: 3.5' SBr: 21.3
 Mag/arcsec² Earth Distance: 2.1 AU

● ◊ Globule	● ⊙ Planetary	• - Mult. Star	● 9	● 5
○ ◊ Open Cl.	□ ⊠ HII Region	☄ Comet	● 10	● 6
● ⊙ Globular Cl.	□ ⊠ SN Remnant	○ ⊙ Galaxy	● 11	● 7
	□ ⊠ Ref. Neb.	○ ⊙ Galaxy Gr.	● 12	● 8
	◇ ◊ Dark Neb.	● ✦ Quasar		