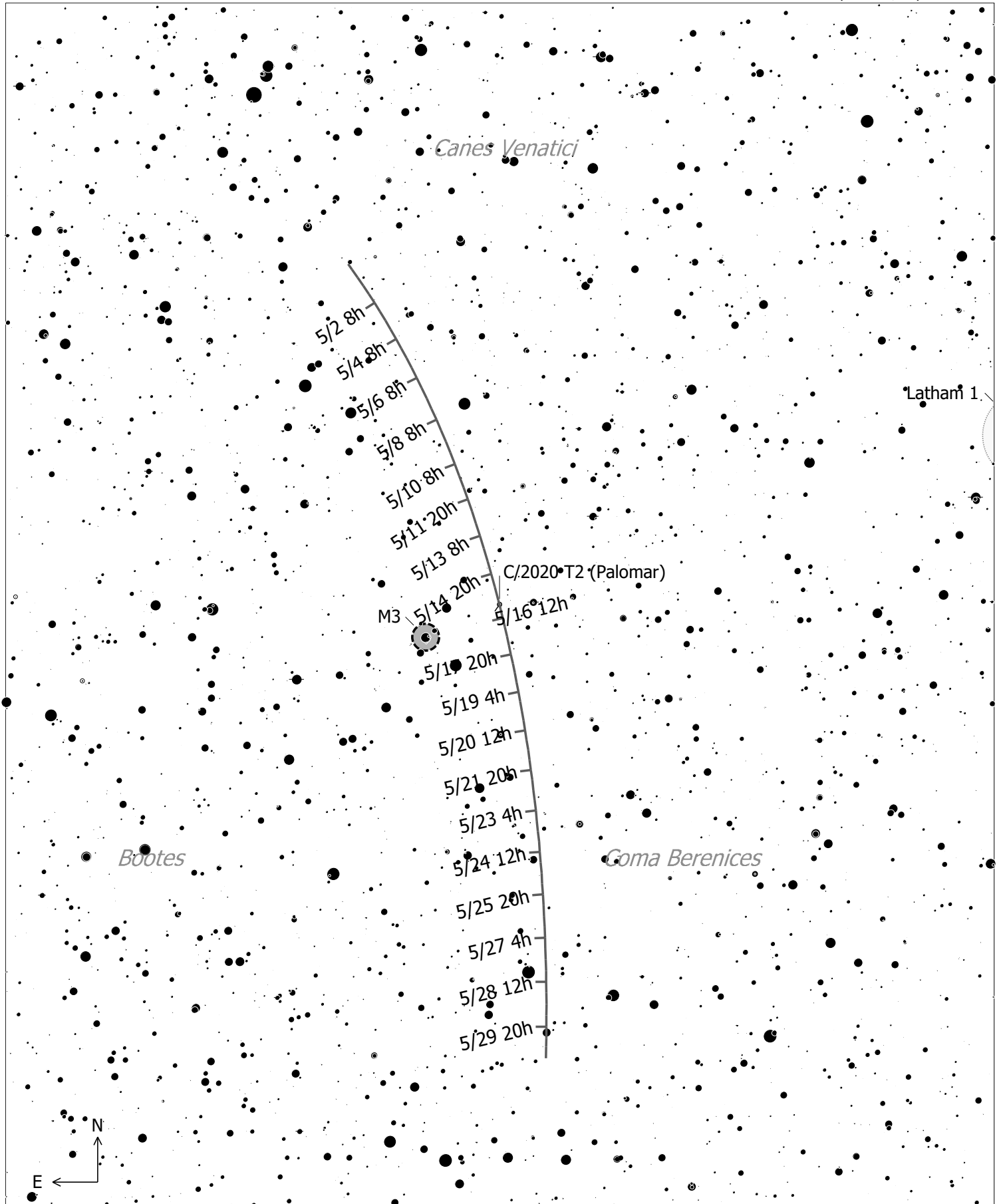


C/2020 T2 (Palomar) (Comet)

Magnitude: 12.07 Coma Diameter: 2.9' SBR: 23.0 Mag/arcsec<sup>2</sup> Earth Distance: 1.4 AU

◇	Dark Neb.	•	Mult. Star	• 7	● 1
●	Globule	☾	Comet	• 8	● 2
○	Open Cl.	○	Galaxy		● 3
●	Globular Cl.	○	Galaxy Gr.		● 4
		•	Quasar		● 5
		•	Planetary		● 6
□	H II Region				
□	SN Remnant				
□	Ref. Neb.				



C/2020 T2 (Palomar) (Comet)  
 Magnitude: 12.07 Coma Diameter: 2.9' SBr: 23.0  
 Mag/arcsec<sup>2</sup> Earth Distance: 1.4 AU

- |                |               |              |          |
|----------------|---------------|--------------|----------|
| ● ○ Globule    | ● ○ Planetary | • Mult. Star | ● 8 ● 4  |
| ○ Open Cl.     | □ HII Region  | ☄ Comet      | ● 9 ● 5  |
| ● Globular Cl. | □ SN Remnant  | ○ Galaxy     | ● 10 ● 6 |
|                | □ Ref. Neb.   | ○ Galaxy Gr. | ● 11 ● 7 |
|                | ◇ Dark Neb.   | ● Quasar     |          |