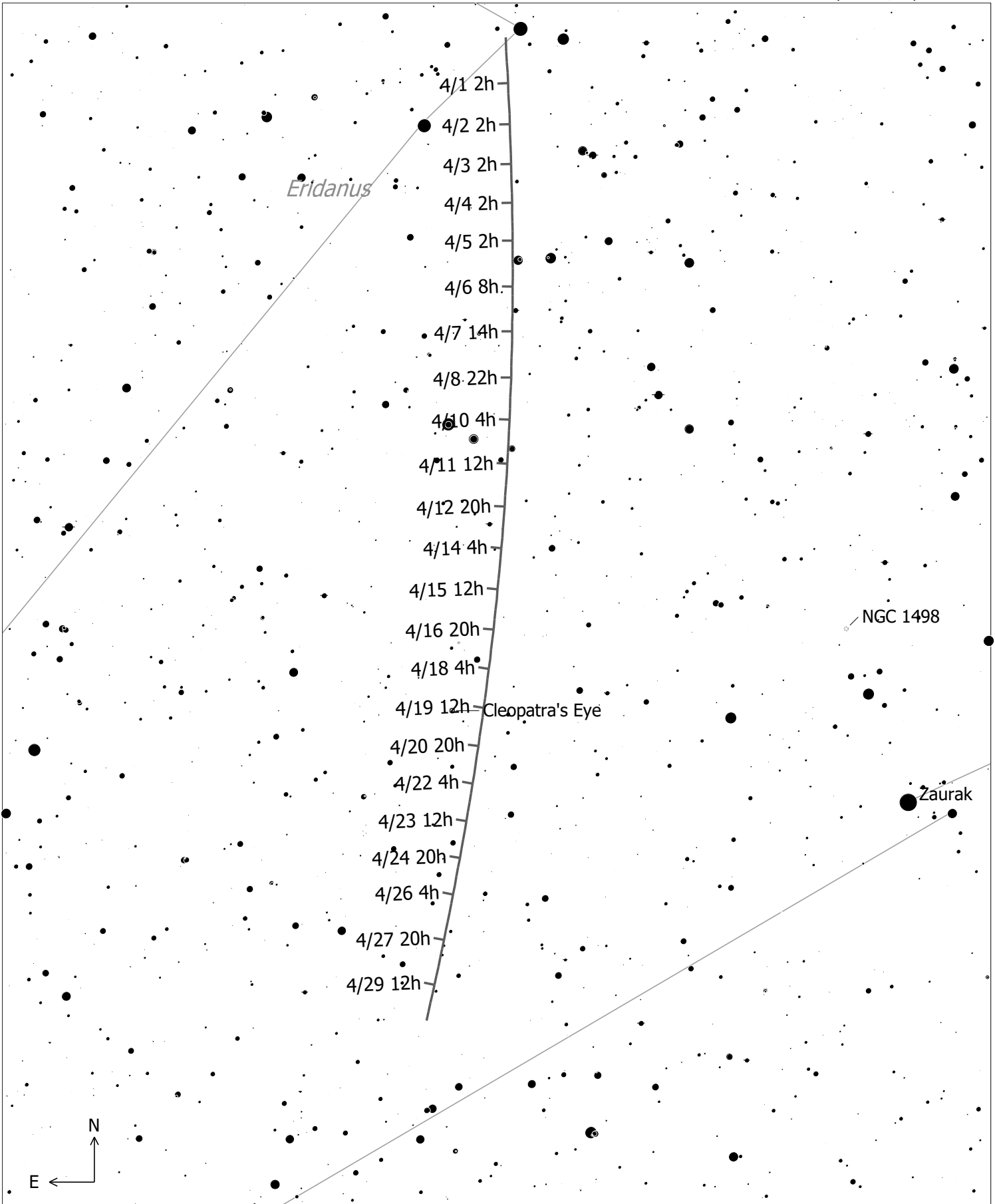


C/2021 A4 (NEOWISE) (Comet)  
 Magnitude: 13.80 Coma Diameter: 3.3' SBr: 25.0  
 Mag/arcsec<sup>2</sup> Earth Distance: 1.7 AU

|                  |               |              |     |     |
|------------------|---------------|--------------|-----|-----|
| ● ◆ Globule      | ● ⊙ Planetary | ◆ Mult. Star | ● 5 | ● 1 |
| ○ Open Cl.       | □ HII Region  | ☄ Comet      | ● 6 | ● 2 |
| ● ⊙ Globular Cl. | □ SN Remnant  | ○ Galaxy     | ● 7 | ● 3 |
|                  | □ Ref. Neb.   | ○ Galaxy Gr. | ● 8 | ● 4 |
|                  | ◆ Dark Neb.   | ● + Quasar   |     |     |



C/2021 A4 (NEOWISE) (Comet)  
 Magnitude: 13.80 Coma Diameter: 3.3' SBr: 25.0  
 Mag/arcsec<sup>2</sup> Earth Distance: 1.7 AU

|                  |                |                |          |
|------------------|----------------|----------------|----------|
| • ♦ Globule      | ● ⊙ Planetary  | - Mult. Star   | • 8 ● 4  |
| ⊙ Open Cl.       | □ ⊗ HII Region | ☄ Comet        | • 9 ● 5  |
| ● ⊙ Globular Cl. | □ ⊗ SN Remnant | ○ ⊙ Galaxy     | • 10 ● 6 |
|                  | □ ⊗ Ref. Neb.  | ○ ⊙ Galaxy Gr. | • 11 ● 7 |
|                  | ◇ ♦ Dark Neb.  | ● ♦ Quasar     |          |