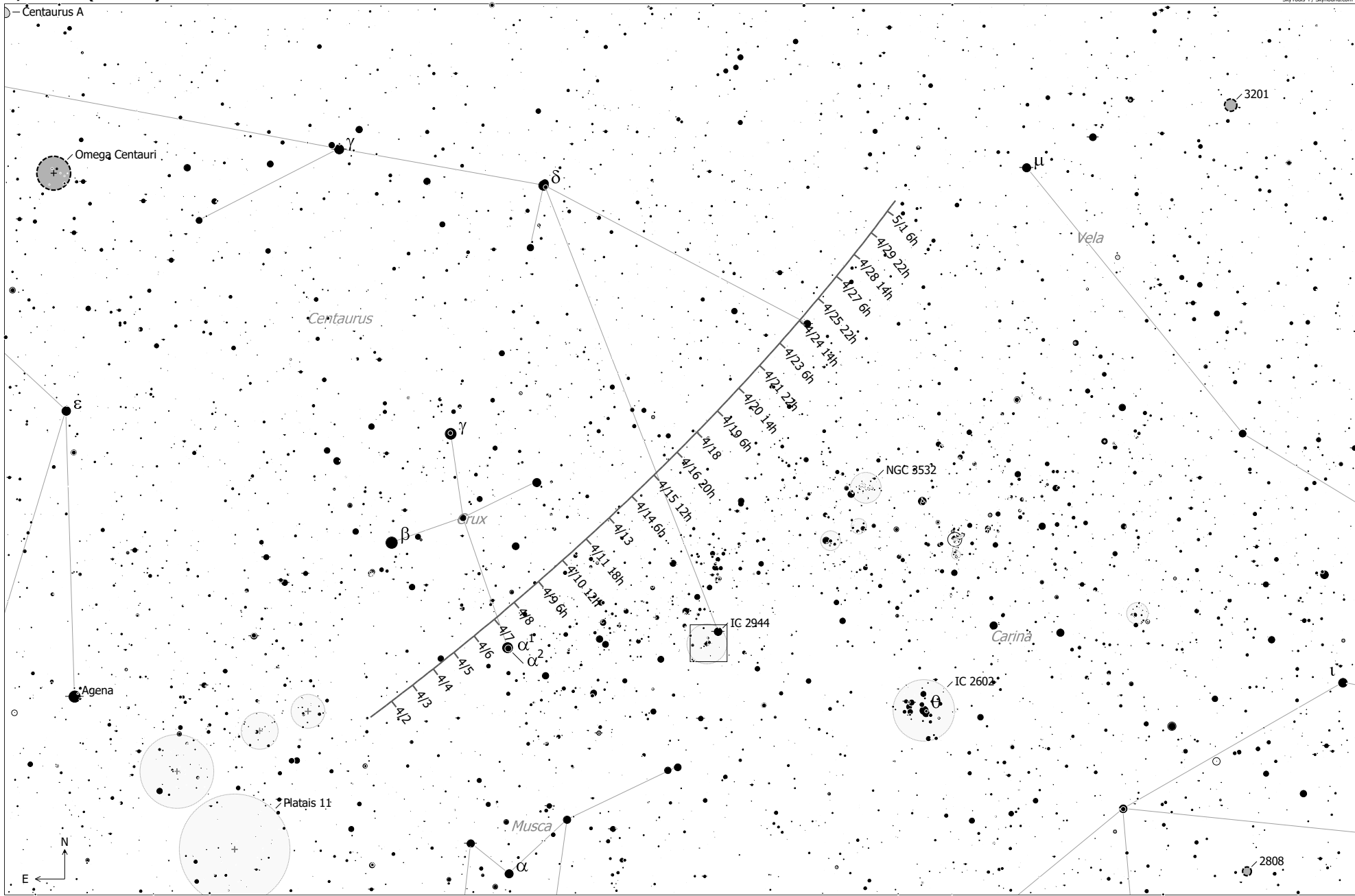


C/2025 A6 (Lemmon)



C/2025 A6 (Lemmon) (Comet)  
 Magnitude: 13.06 Coma Diameter: 1.9' SBR: 23.1 Mag/arcsec<sup>2</sup> Earth Distance: 2.1 AU

- |                |               |       |
|----------------|---------------|-------|
| ◇ Dark Neb.    | • Mult. Star  | 9 ● 2 |
| ● Globule      | ☄ Comet       | ● 3   |
| ○ Open Cl.     | ○ Galaxy      | ● 4   |
| ● Globular Cl. | ○ Galaxy Gr.  | ● 5   |
|                | ● Quasar      | ● 6   |
|                | ● Planetary   | ● 7   |
|                | □ H II Region | ● 8   |
|                | □ SN Remnant  |       |
|                | □ Ref. Neb.   |       |