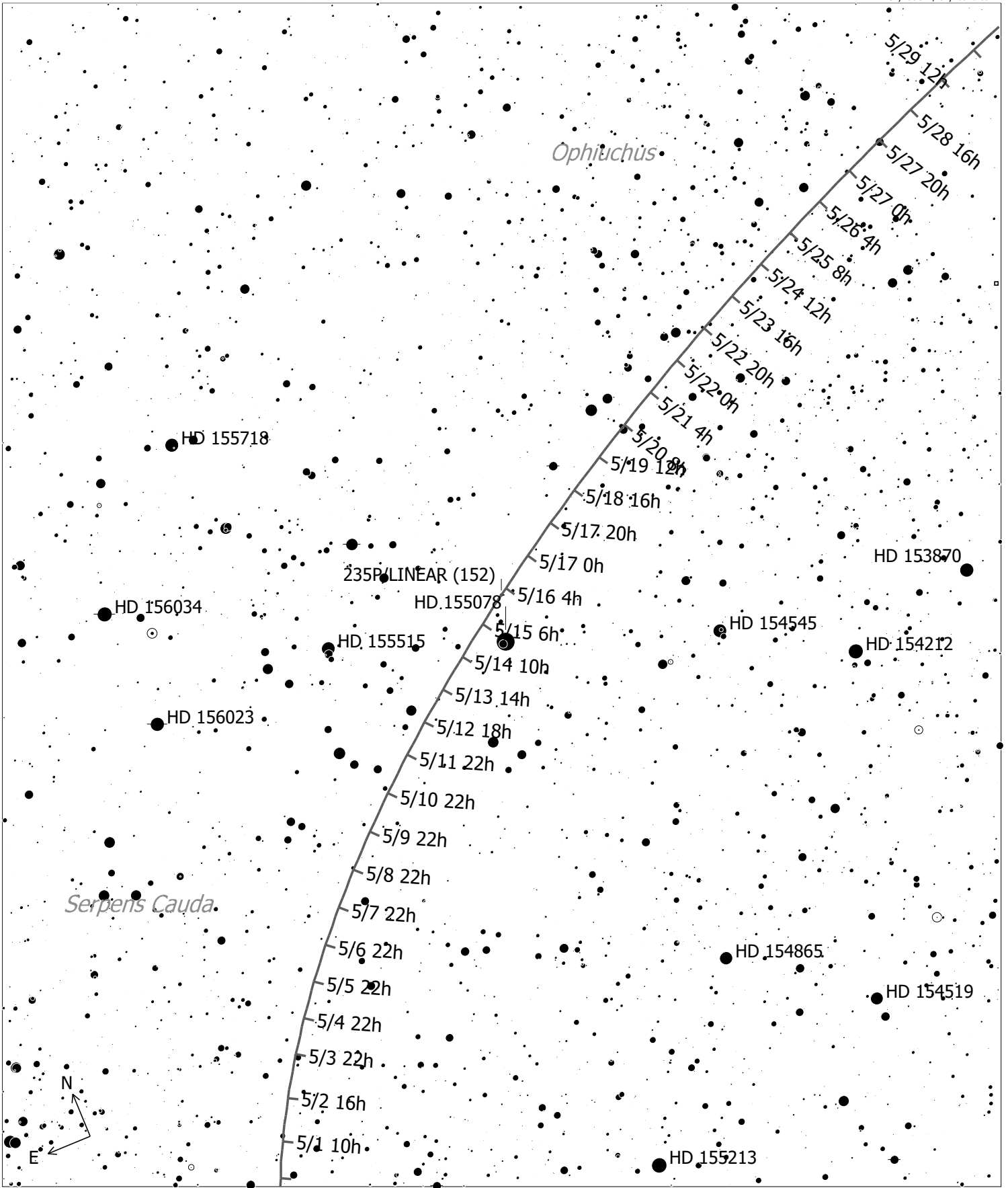


235P/LINEAR



235P/LINEAR (Comet)
 Magnitude: 15.17 Coma Diameter: 31" SBr: 22.4
 Mag/arcsec² Earth Distance: 1.3 AU

•• Globule	●⊙ Planetary	• Mult. Star	• 11 ● 7
⊙ Open Cl.	□⊗ HII Region	☄ Comet	• 12 ● 8
● Globular Cl.	□⊗ SN Remnant	○ Galaxy	• 13 ● 9
	□⊗ Ref. Neb.	○ Galaxy Gr.	• 14 ● 10
	◇ Dark Neb.	● Quasar	